

Update on CTICC 2012/2013 Integrated Report for GRI compliance

Introduction:

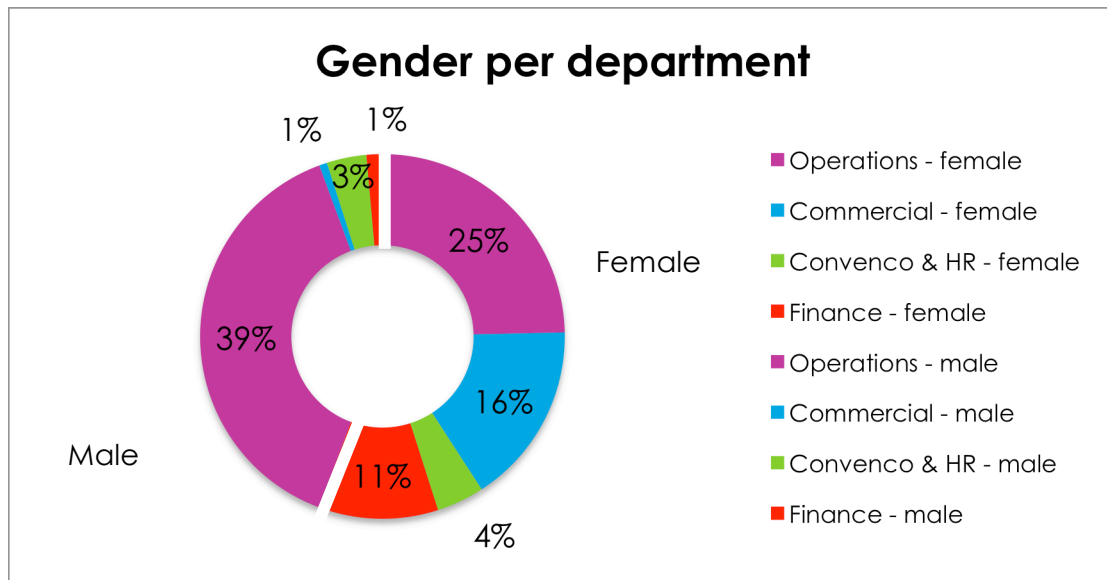
This document serves as an addendum to the CTICC Integrated Report 2013 to ensure compliance for the GRI Application Level Check.

Errata 1: Page 89

The CTICC has a total of 142 staff members, with details outlined on page 44.

Errata 2: Page 46

This graph provides a breakdown of the gender per department.



Description	Staff
Operations - female	35
Commercial - female	23
Convenco & HR - female	6
Finance - female	15
Operations - male	55
Commercial - male	1
Convenco & HR - male	5
Finance - mail	2

Errata 3: Page 134

Include reference to page 44 under profile disclosure 2.8.

22 November 2013



We are a green conscious convention centre.





Statement GRI Application Level Check

GRI hereby states that **Cape Town International Convention Centre** has presented its report "IAR 2013" to GRI's Report Services which have concluded that the report fulfills the requirement of Application Level B+.

GRI Application Levels communicate the extent to which the content of the G3.1 Guidelines has been used in the submitted sustainability reporting. The Check confirms that the required set and number of disclosures for that Application Level have been addressed in the reporting and that the GRI Content Index demonstrates a valid representation of the required disclosures, as described in the GRI G3.1 Guidelines. For methodology, see www.globalreporting.org/SiteCollectionDocuments/ALC-Methodology.pdf

Application Levels do not provide an opinion on the sustainability performance of the reporter nor the quality of the information in the report.

Amsterdam, 25 November 2013

A handwritten signature in blue ink, appearing to read "Nelmara Arbex".

Nelmara Arbex
Deputy Chief Executive
Global Reporting Initiative



The "+" has been added to this Application Level because Cape Town International Convention Centre has submitted (part of) this report for external assurance. GRI accepts the reporter's own criteria for choosing the relevant assurance provider.

The Global Reporting Initiative (GRI) is a network-based organization that has pioneered the development of the world's most widely used sustainability reporting framework and is committed to its continuous improvement and application worldwide. The GRI Guidelines set out the principles and indicators that organizations can use to measure and report their economic, environmental, and social performance. www.globalreporting.org

Disclaimer: Where the relevant sustainability reporting includes external links, including to audio visual material, this statement only concerns material submitted to GRI at the time of the Check on 19 November 2013. GRI explicitly excludes the statement being applied to any later changes to such material.



We are a green conscious convention centre.